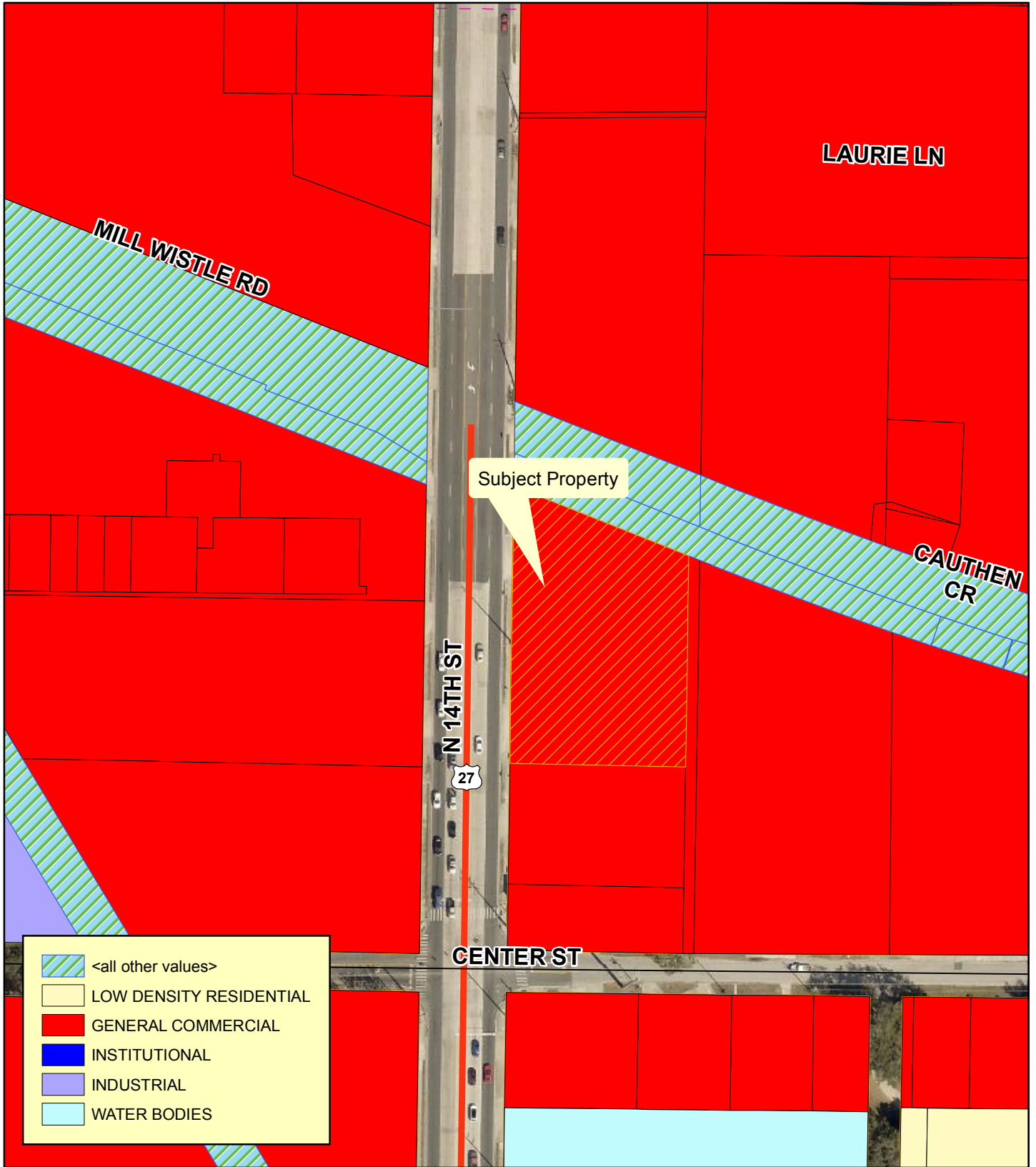

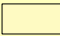






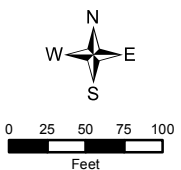
Future Land Use



-  <all other values>
-  LOW DENSITY RESIDENTIAL
-  GENERAL COMMERCIAL
-  INSTITUTIONAL
-  INDUSTRIAL
-  WATER BODIES



**Planning
& Zoning
Division**



KC Property Group LLC
 410 North 14th Street Leesburg, FL 34748
 AK 1455707
 Section 22, Township 19 South, Range 24 East
 September 17, 2019